

GLADSTONE VILLAGE, MERRYLANDS

DA2023/0485

PUBLIC ART

PREPARED FOR

MERRYLANDS 88(B) DEVELOPMENT PTY LTD

PREPARED BY

Graham Chalcroft / Vertebrae

16/07/2024



T: 0412 507 553

E: gchalcroft@vertebrae.com.au

www.vertebrae.com.au

PO Box 443, Dulwich Hill NSW 2203

ABN: 87 436 287 335

PUBLIC ART + SITE LOCATIONS

SUMMARY

Merrylands 88(B) Development Pty Ltd engaged Graham Chalcroft of Vertebrae to develop designs to integrate public art as a central public domain focal point for Gladstone Village development. Proposed artworks are located on sites set to be a plaza and park that will be dedicated to Cumberland Council as outlined in DCP – Part F2-7.

The proposed public artworks and curatorial vision aim to align with Cumberland DCP– Part C–Development in Business Zones/3.4. Public art; and Cumberland DCP – Part F2 Business Site Specific/F2-7 Merryland Neil Street Precinct.

Public art directions are informed by and have referenced several Council documents:

- Merrylands Town Centre Public Domain Plan 2021(draft)
- Cumberland Community Strategic Plan 2017-27
- Cumberland Cultural Plan 2019-2029
- Open Space and Recreation Strategy 2019-29
- Cumberland 2030: Our Local Strategic Planning Statement February 2020
- Disability Inclusion Action Plan and Youth Strategy.

Public art for Gladstone Village has placed emphasis on integrating art with public domain landscape architecture, urban design and architectural design intent. Holistic public art design and planning considers the applicant, Council, community members and stakeholders to achieve outcomes that support:

- Contribute design excellence to enhance Gladstone Village’s vision and aspirations
- Create a meaningful place that is celebrated as a local asset by Cumberland Council
- Interpret local stories and the sites history, ecology and culture
- Activate the public domain space for a multitude of passive and active uses
- Create a destination that encourages people to gather, spend time and relax
- Connect Gladstone Village residents, businesses and visitors to the site
- Align with Council policy and plans - cultural, economic community, play, ecology

PUBLIC ART ROLE and FUNCTION

Public art can be defined as art created and placed in the public domain often with a specific site intent as a focal consideration of the artwork from its beginning conceptual ideas stage through to design development, fabrication and installation.

Public art, whether iconic or intimate in scale, becomes part of a broader planning strategy to create a visual identity for a space. Public artworks may integrate with branding and marketing strategies for government, business, organisations and tourism.

Public art offers a valued role that contributes to enhancing public and private-public domain spaces and amenities to foster a sense of place with the added benefit of supporting health and wellbeing in society.

PROPOSED PUBLIC ARTWORKS + OUTCOMES

Proposed public artwork consists of two (2) principal works with an overlay of integrated interpretive artworks. Interpretive works extend beyond the principal art sites as part of a connective trail that weaves through Gladstone Village public domain spaces.

Public artworks intend for creative nodal zones for learning, shared communal connection and local celebration.

The interpretive detailing process facilitates opportunities for participatory community co-design engagement activities and events.

Aims and outcomes for public artworks include:

- Inclusive, accessible and adaptive spaces for people to form an emotional connection
- Interactive, vibrant, and multi-use to create a sense of place and communal ownership
- Develop the cultural identity of the community and reflect the culture of the community
- Keeping cool - water feature to address climate resilience and urban heat island effect
- Promote sustainability and WSUD as part of a water catchment management plan
- Integrate biophilic design and ecology for comfort and wellbeing
- Draw attention to the site’s relationship to the nearby source of A’Becketts Creek
- Interpret local stories and site history, heritage, ecology and culture
- Develop a localised interpretation of ecological habitat and species biodiversity
- Explore the exciting possibilities and interfaces between urban and natural zones
- Create opportunities for community co-design through participatory engagement
- Support a 24-hour activation of the precinct by offering vibrant and engaging works
- Express daytime and distinctive night presence and experiences with illumination
- Comply with OH&S, engineering standards, low maintenance and durable design

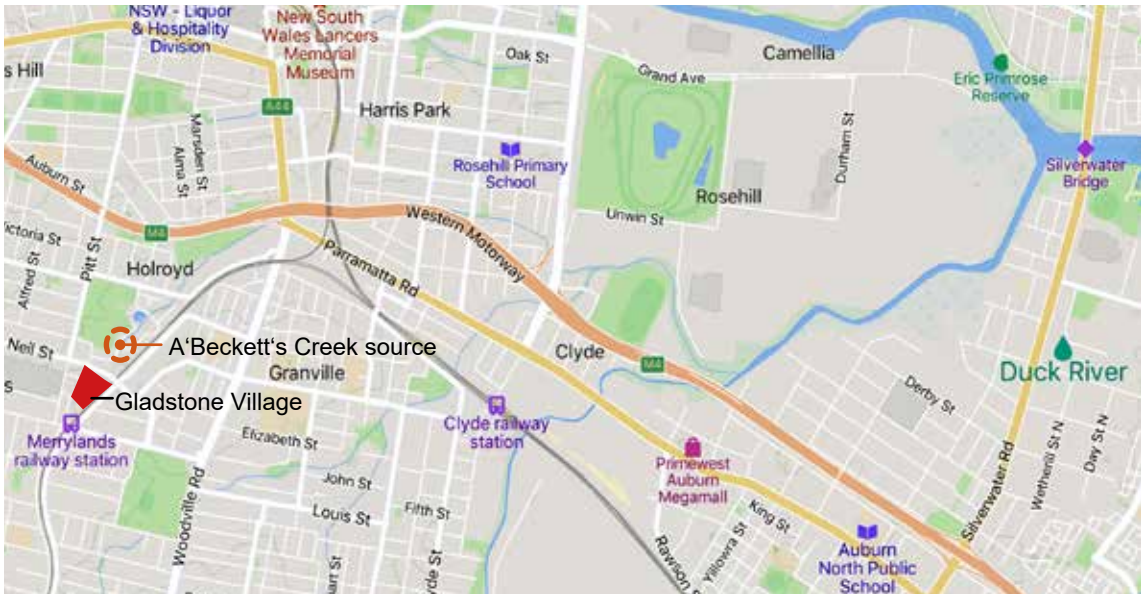
CURATORIAL VISION

CURATORIAL APPROACH + THEMES

The proposed principal public artworks **Life Cycles + Water Cycles** supported by integrated interpretive artworks, are located close to the source of A'Beckett's Creek near Stockland Shopping Centre. The notion of a source, or beginning, presents a curatorial springboard to explore themes interpreting facets of nature, growth and the cyclic drivers that support and maintain life.

The moon's orbit around the earth and the earth's orbit around the sun influence the phenological (biological) clock. This includes daily tides, seasonal change and energy from the sun. The dynamic forces between the sun, earth, and moon have created a rhythm that has guided humans for thousands of years. Our circadian clock is tied to these elemental cycles.

An innate understanding of biological cycles and a reading of time has been key to the success of human survival. It has been a vital skill to observe subtle shifts in flora and fauna characteristics and behaviour, growth patterns and seasonal change cues such as weather patterns to determine where to find food, shelter and resources. Whether nomadic or as humans became an increasingly settled and agrarian society, skills reliant on the senses of touch, taste, sight, sound and shared knowledge have been applied to understand habitat, climate and life cycles to guide the search for resources, peak time to harvest crops and find temporary or permanent shelter.



Map showing Gladstone Village proximity to A'Beckett's Creek

LOCAL THEMATIC CONTEXT

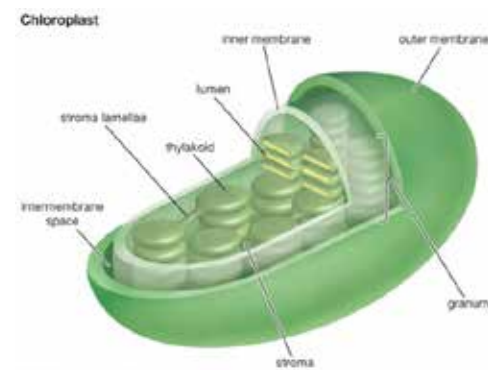
From a context of pre-colonial settlement and pre-channelisation of its upper reaches, A'Becketts Creek can be considered a source of life as a perennial stream and a northern tributary of the Duck River feeding into the Parramatta River. As part of the Parramatta River catchment, the water course follows a terrestrial and aquatic journey through freshwater to saltwater habitat zones supporting a rich flora and fauna biodiversity.

Urbanisation has significantly impacted natural habitat and hydrological flow of stormwater run-off. Proposed public art and interpretive elements offer opportunities for Cumberland Council and environmental and community organisations to develop educational material and activities exploring local ecological systems, climate and approaches to water sensitive urban design (WSUD). Proximity to the constructed swale is a cue to encourage playful learning of WSUD in action through a contemporary approach to stormwater water management infrastructure in Gladstone Village.

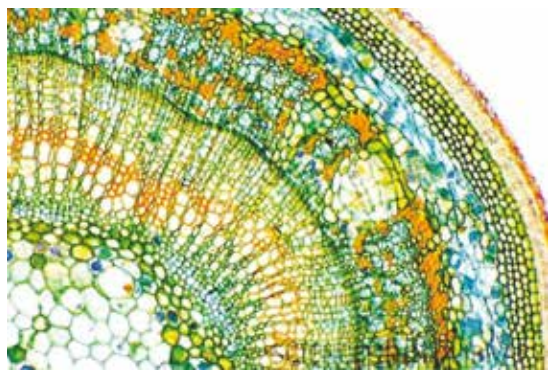
Artist facilitated creative workshops to develop community co-designed interpretive artwork detailing will contemplate cultural connections to the circle of life through place, water, ecology and aspects of biological life. As well as the often focused on macro species, artwork ideas can draw attention to the hidden microscopic world of primary producers such as phytoplankton. Phytoplankton are some of the earliest photosynthesising organisms that evolved into trees and plants and provide up to 50% of the earth's oxygen. Photosynthesis further relates to the broader universal curatorial theme of energy from the sun as a giver of life.



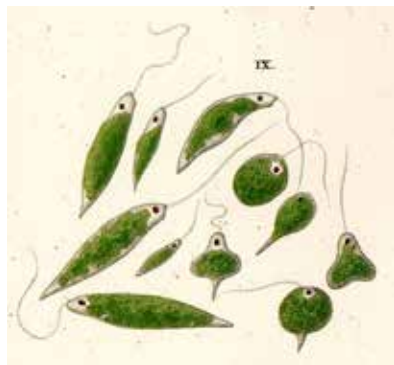
Energy from the sun



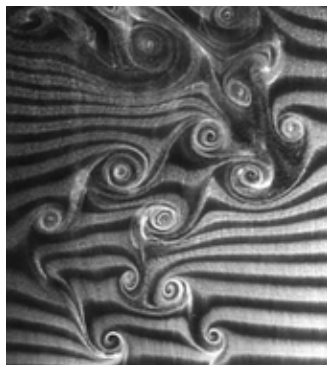
Plant chloroplasts perform photosynthesis during



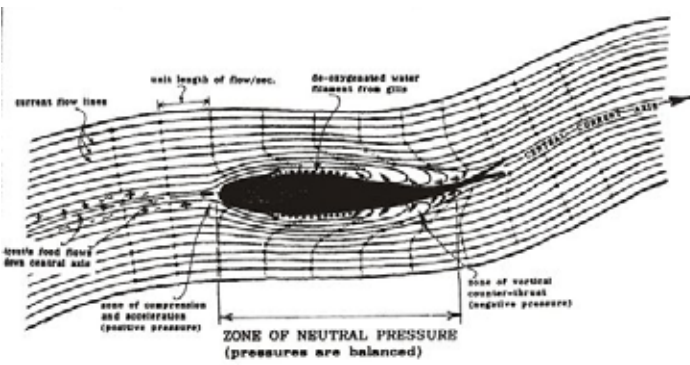
Plant vascular bundles transport water, nutrients, sugars



Microscopic aquatic phytoplankton



Water vortex patterns



Viktor Schauberger-Fish Swimming

PRINCIPAL PUBLIC ART OVERVIEW

ARTWORK OVERVIEW

Two interrelated public artworks, **Life Cycle** and **Water Cycles** with a secondary trail of interpretive artworks linking both works and public domain sites are proposed for Gladstone Village. All artworks are thematically connected through a curatorial vision with narratives exploring cyclic rhythms in nature, growth and time. a ground plane water feature with paving and seating elements located next to the adventure play area; and an iconic sculptural work located close to Terminus Place functioning as a welcoming precinct gateway marker.

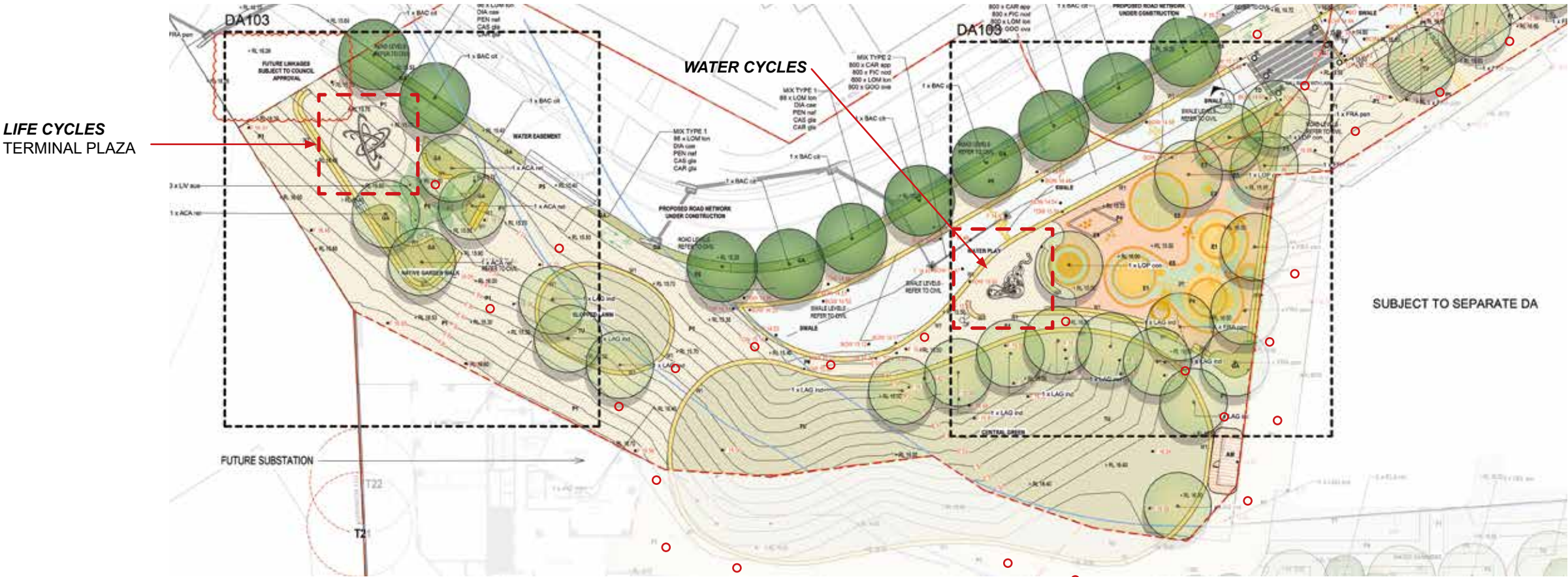
LIFE CYCLES

The welcoming gateway and wayfinding artwork in Terminal Plaza announces and invites entry into the heart of the Gladstone Village Precinct. Iconic scaled interlocking rings use colour, form and light to symbolically represent life forces— biological growth, natural phenomena and seasonal cycles. Audiences from diverse cultural backgrounds interacting with the work at close quarters are bathed in colour light cast by sunlight refracted through coloured glass and mesmerising LED illumination at night. The immersive work can be experienced as a ceremonial act to pause and reflect on personal and communal cultural connections with nature and respectfully acknowledge First Nation custodianship and connection to Country.

WATER CYCLES

Water bodies draw people together to access survival resources, for recreation and to conduct cultural and ritual activities. Human settlements have traditionally been built around water. The local spring, the village well and water fountains were a source of safe drinking water and a meeting place for the community.

The proposed water play feature artwork intends to be a focal gathering space for Gladstone Village residents, workers and the Merrylands community. Sound and the visual presence of water have biophilic wellbeing benefits that connect people with nature. The water feature caters for active and passive ‘dry’ water interactions pending the season and limitations imposed during water restriction periods. Interpretive overlays on the artworks and paving surfaces strengthen communal connection and understanding of the curatorial vision themes of local ecology, hydrological cycles through different aquatic zones and inherent species biodiversity.



○ Indicative Interpretive Artworks
PUBLIC ART LOCATIONS overlay on LANDSCAPE PRECINCT PLAN 2022035-LD-DA101[4] (detail) - Not to scale
Source: LAND+FORM STUDIO

LIFE CYCLES: OVERVIEW

SCULPTURE FORM + MATERIALS

The iconic scaled sculptures in Terminal Plaza function as a gateway signifier and wayfinding feature to the Gladstone Village Precinct. The Native Garden Walk provides shade and rest to contemplate the works and their thematic relationship with nature. Circling and weaving through the sculptural rings establishes an immersive experience. The work emits a vibrant and atmospheric sense of wonder that caters for day and night time interactions through the creative use of colour, scale, form and illumination. Structurally engineered and fabricated in steel or aluminium with toughened safety glass, the robust and durable artwork is designed to withstand the rigours of an external environment. Intricate artwork detailing incorporated into the external metal skin can be surface etched, painted, or cut out and backlit. Ceramic print or interlay laminates can be applied to the glazing.



Active immersion with sculpture



Translucent glass interacts with changing external light conditions



Public immersed in cast colour light



Olafur Eliasson. Dagslyspavillon
Sunlight colour wash on surrounding surfaces



Li Hao/One Take Architects. Pop Star, Shanghai, China
Dichroic glass captures the notion of light and water refraction



Lace Wings - The Golf House Canopy Surry Hills
Ceramic print on toughened safety glass

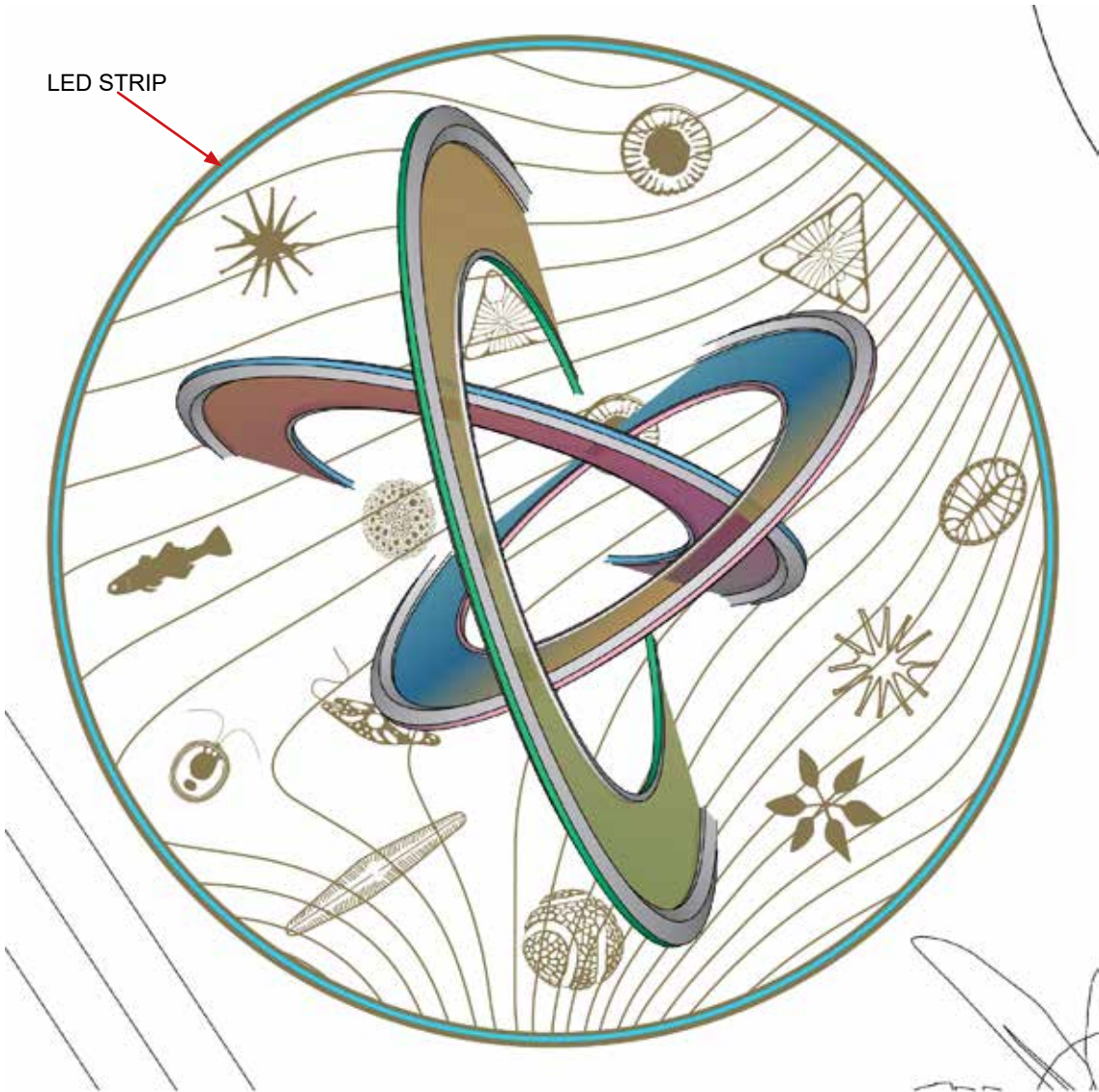
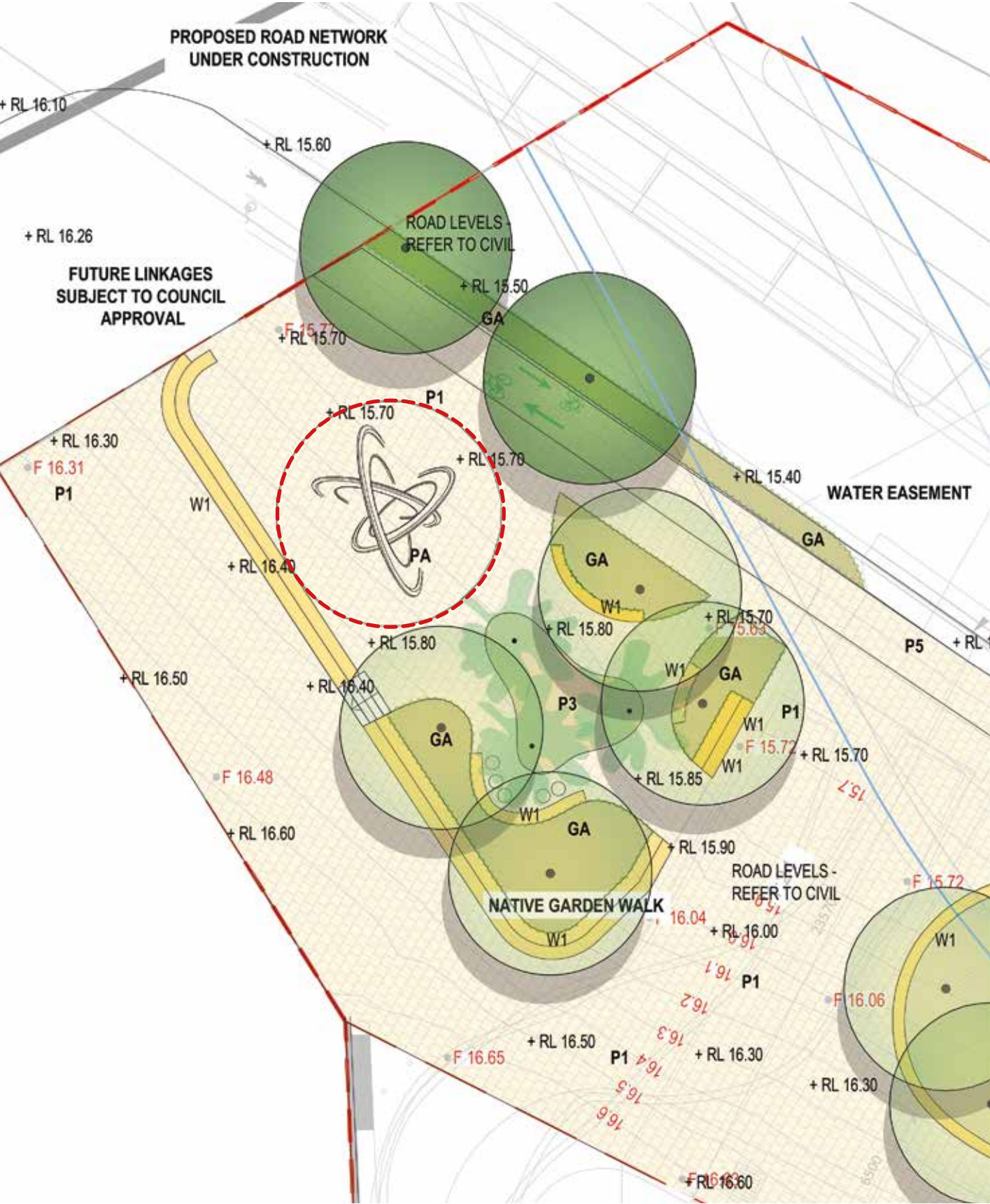


Stuart Green. Droplet
Pattern details into steel + backlit



Jean-Bernard Metall. Alliance, Cardiff,
Stainless steel sculpture construction

LIFE CYCLES: PLAN VIEW

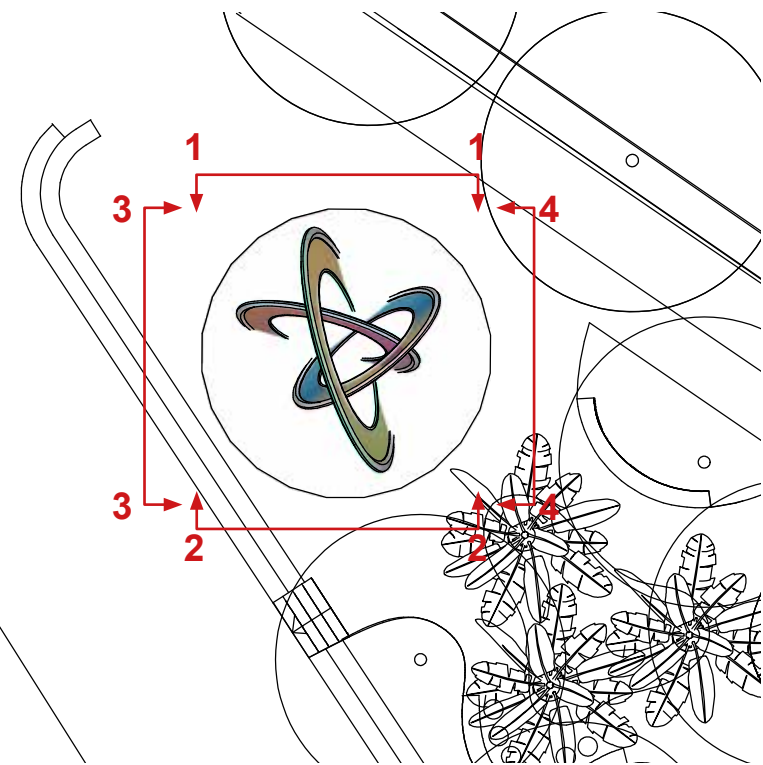


LED ground strip + Interpretive Artworks - Indicative only, artworks co-designed with the local community.

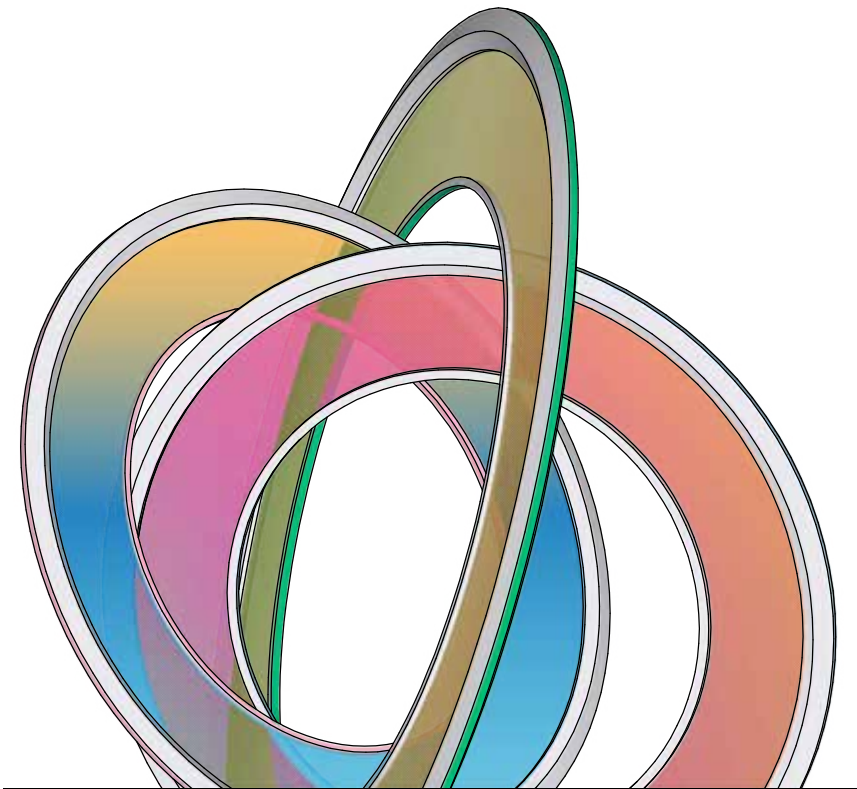
PLAN VIEW - Scale 1:50 @ A3
Source - Vertebrae

LIFE CYCLES TERMINAL PLAZA PUBLIC ART refer to LANDSCAPE DETAILED AREAS / 2022035-LD-DA103[4]
Source: LAND+FORM STUDIO

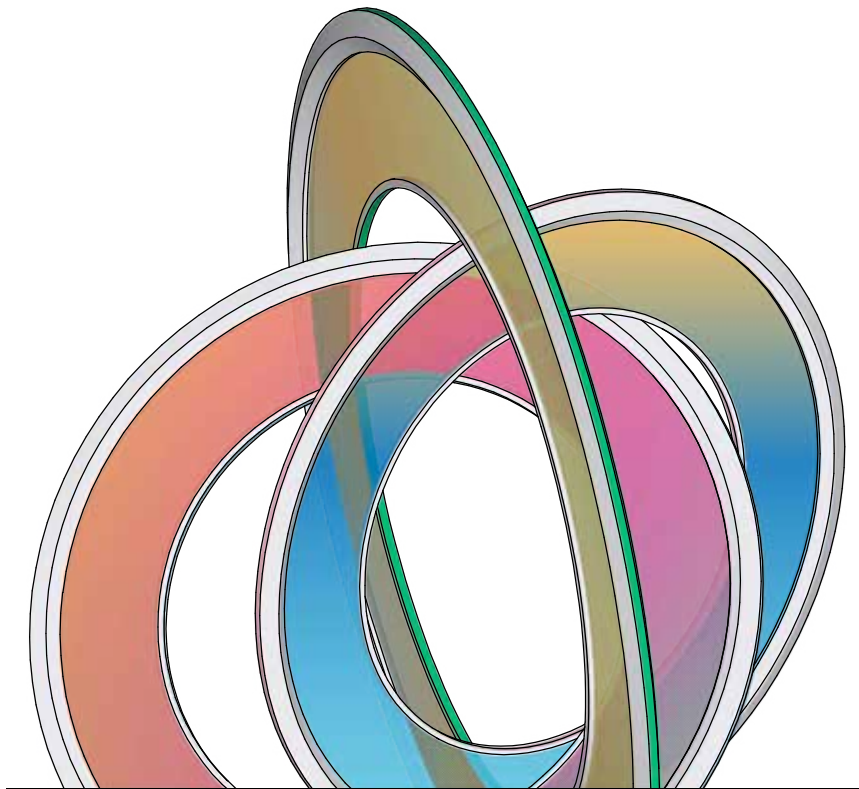
LIFE CYCLES: ELEVATION SECTION VIEWS



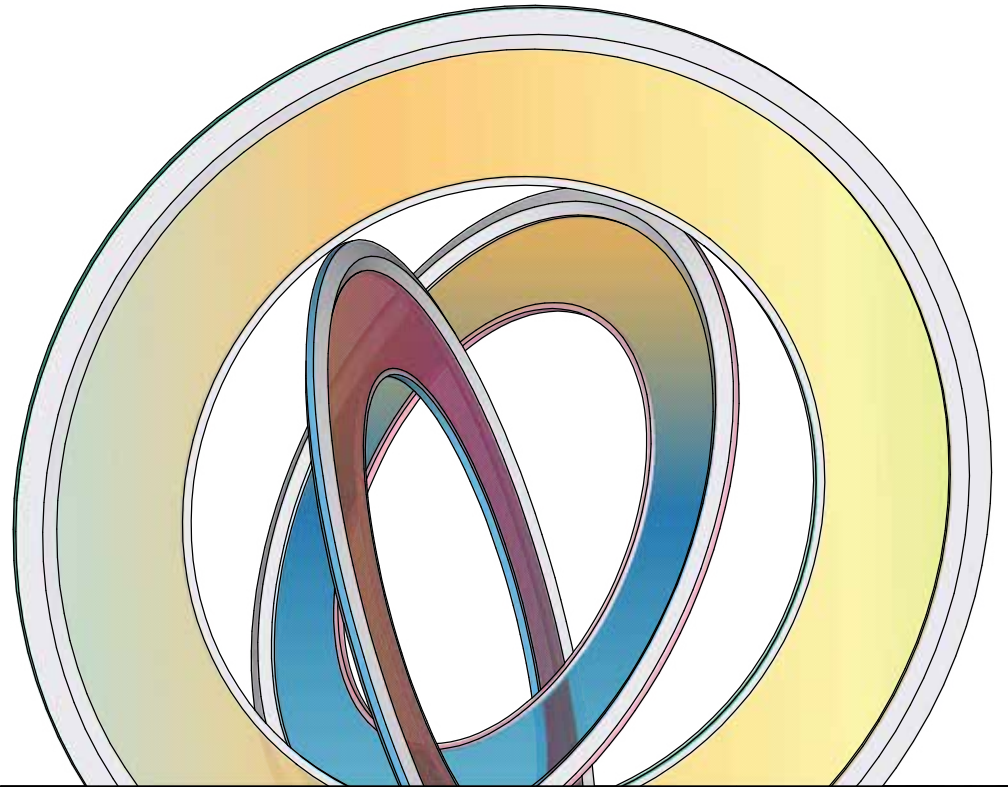
PLAN VIEW - Scale 1:200
Source: Vertebrae



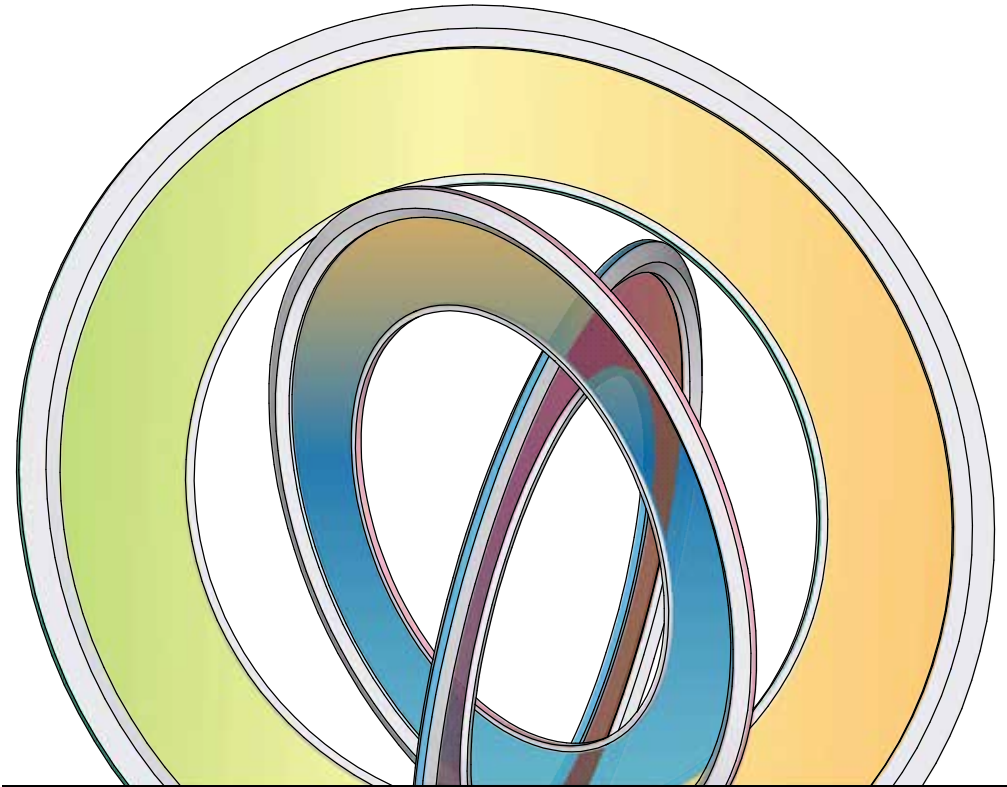
1. SECTION ELEVATION - Scale 1:50 @ A3



2. SECTION ELEVATION - Scale 1:50 @ A3



3. SECTION ELEVATION - Scale 1:50 @ A3

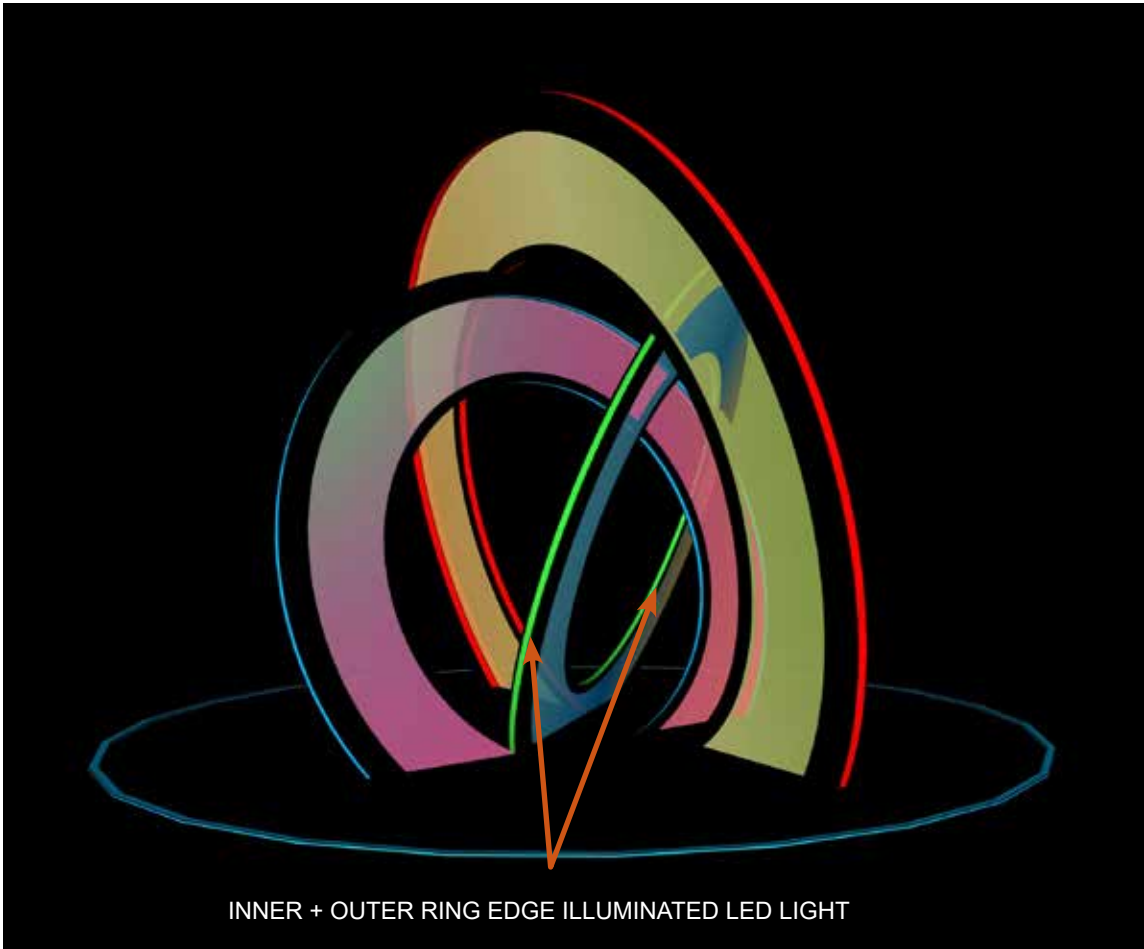


4. SECTION ELEVATION - Scale 1:50 @ A3

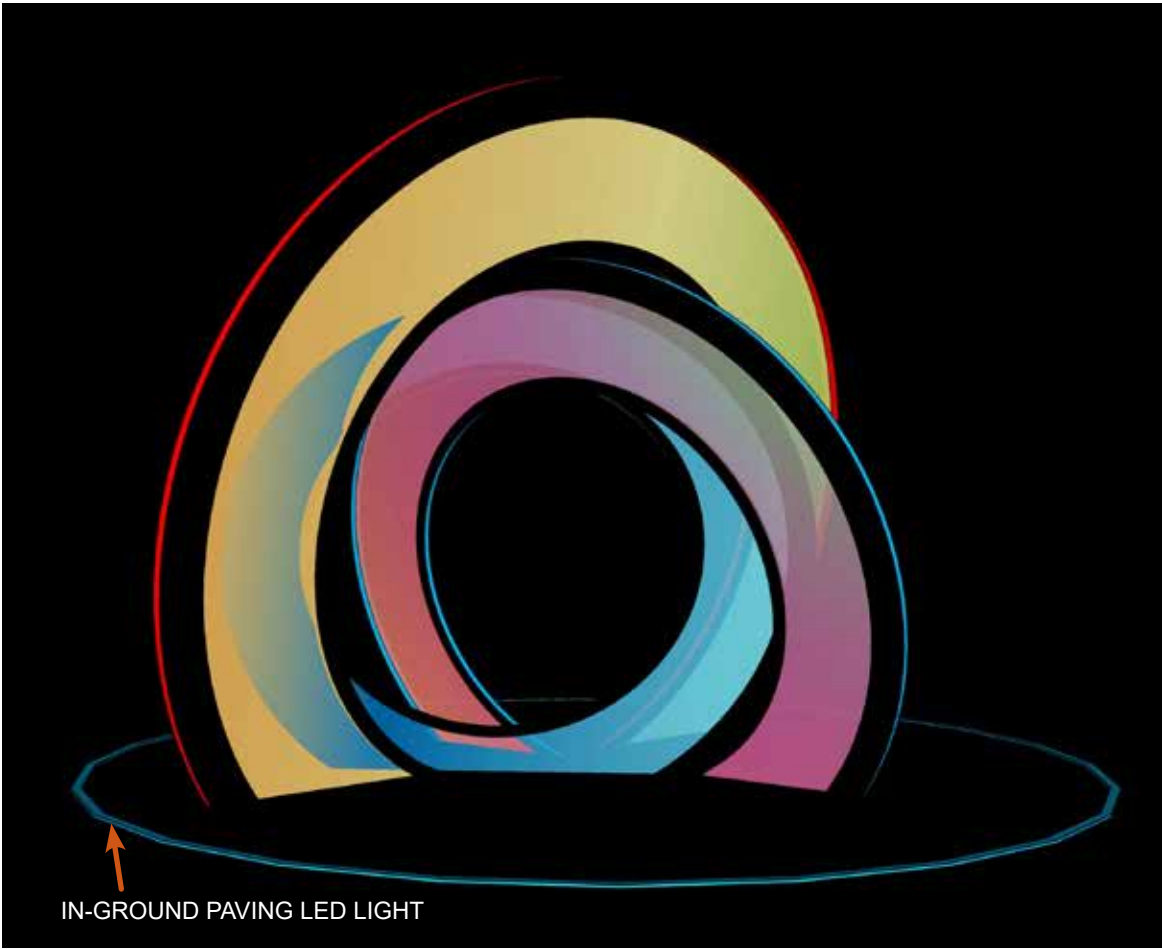
LIFE CYCLES: LIGHTING FEATURES

LIGHT QUALITIES

Lighting is an evocative means to symbolically represent energy from the sun, natural growth and the qualities of the lightwave spectrum. Programmable IP65 outdoor weather-rated edge LED ring and floor sequences form a rhythmic, mesmerising, gentle flow that will attract and transfix audiences.



INNER + OUTER RING EDGE ILLUMINATED LED LIGHT



IN-GROUND PAVING LED LIGHT

LED edge lighting casts colour wash over surrounding surfaces and activates the space with a sense of energy and movement that attracts and encourages communal social interaction



Graham Chalcraft/Vertebrae. Litmus

Communal immersion in colour light



Graham Chalcraft/Vertebrae. Litmus

Interaction with changing light programme



Graham Chalcraft/Vertebrae. GER, Pyrmont

LED neon-flex edge product



Graham Chalcraft/Vertebrae. Kaleidosculture Velocity Wheel, Blacktown

LED's single diodes linked to create a chaser effect



Graham Chalcraft/Vertebrae. Eye to the Sky detail

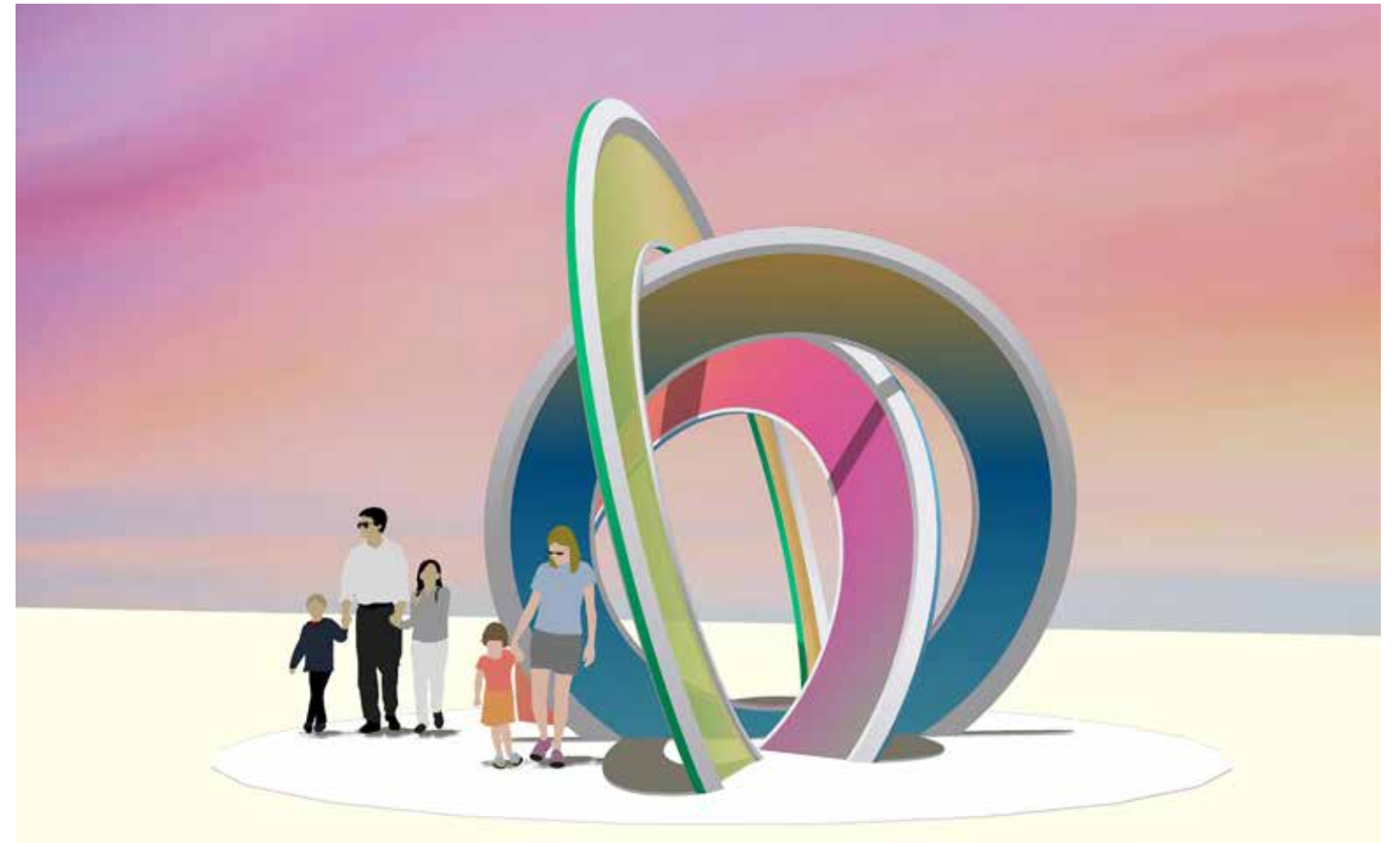
Colour wash on a stainless steel surface



Graham Chalcraft/Vertebrae. Litmus, Carnes Hill, Liverpool

LED behind toughened polycarbonate face

LIFE CYCLES: PERSPECTIVE VIEWS



WATER CYCLES: WATER PLAY OVERVIEW

ART, INTERACTION + CONNECTION

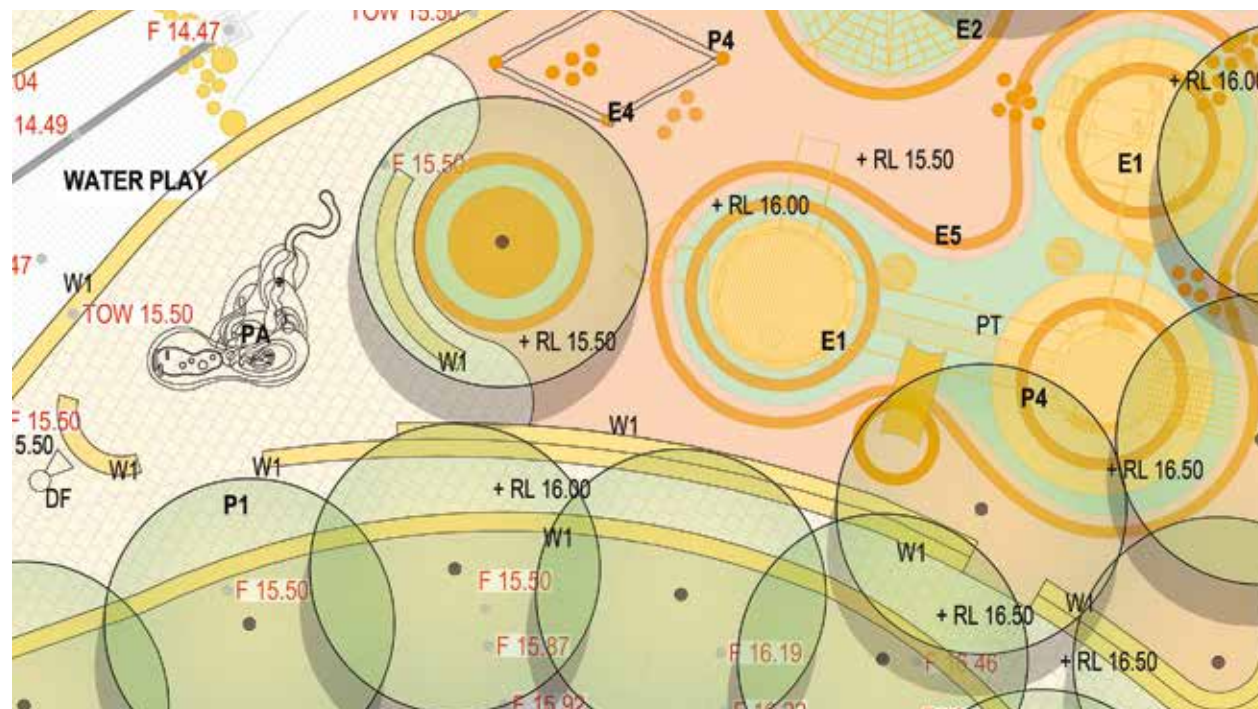
Establishing a water feature presents an opportunity for creative interaction and social inclusion while at the same time addressing critical challenges and evolving transitions in the use and needs of public domain spaces affected by climate change. With ever-increasing temperatures, communities use public spaces later in the day when temperatures drop. Access to water is a welcome relief to keep cool and alleviate heat stress. Access to the water feature is an important asset for economically impacted communities who cannot afford admission to aquatic centres or travel to beaches and distant public swimming lakes. Interpretive and education opportunities with the constructed swale in close proximity is an opportunity exist to promote

BIOPHILIC DESIGN and CULTURAL CONNECTIVITY

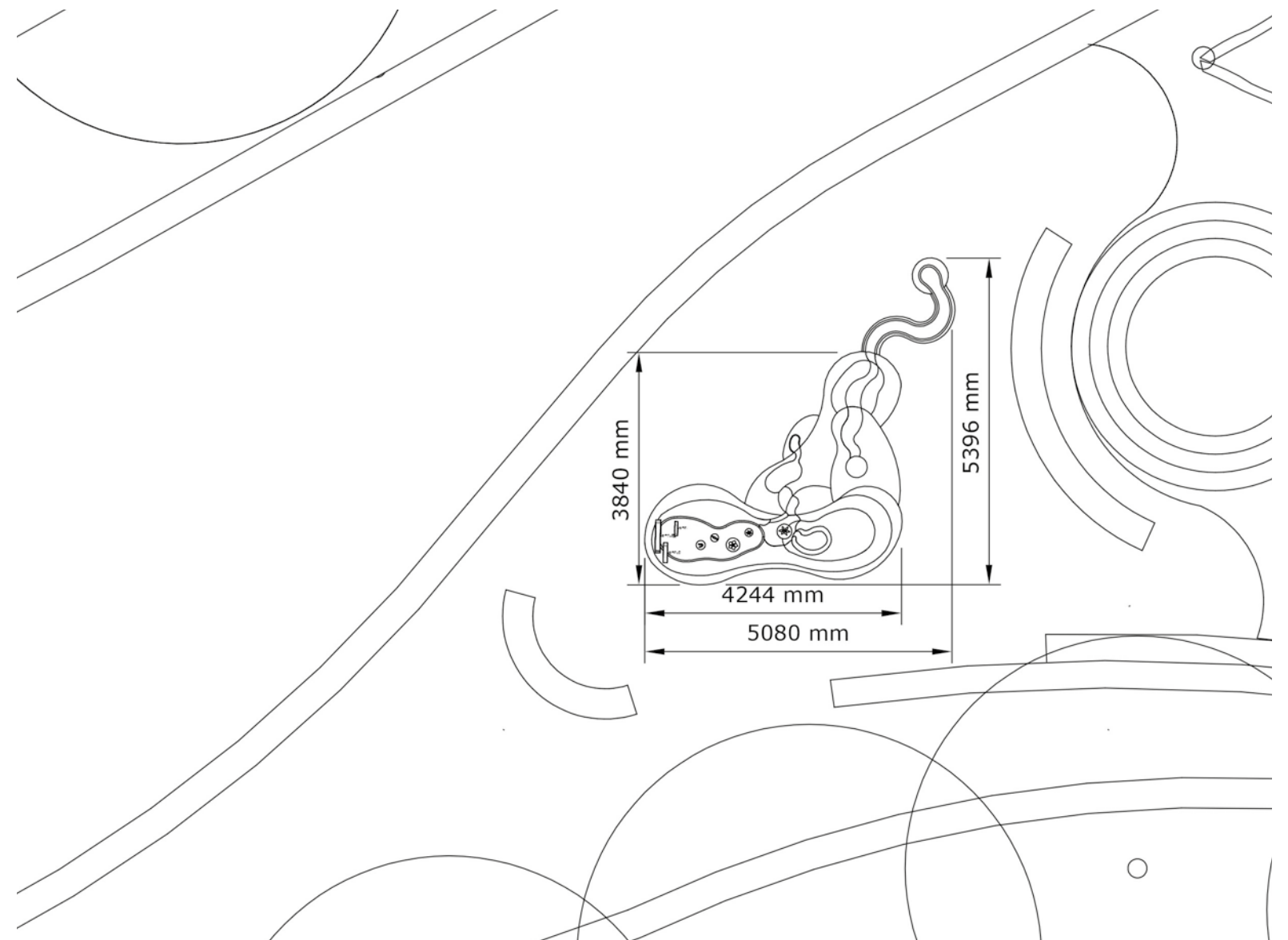
Access and exposure to biophilic design and opportunities to connect with nature is an effective approach to quality open space for health and wellbeing outcomes that meet community needs. Introducing water as a sensory, artistic, and cultural material will positively impact benefits such as relaxation, social interaction, stress reduction, and mental health across all ages, socio-economic groups, and genders. Even passive observation and listening to the sounds of the water will provide psychological benefits through biophilic outcomes.

Other key benefits of water feature interaction include:

- Creatively express the unique characteristics of place
- Local stories of culture and environment understanding
- Foster connection, discovery and celebration
- Restorative, relaxing and calming spaces to support wellbeing
- Space for learning, interpretation and gathering
- Open-ended, imaginative fun and creativity
- Encourages children to engage in social and cooperative play
- Social and developmental benefits across age ranges
- Develop fine/gross motor skills, coordination, problem-solving skills
- Explore the senses and connection to nature



LANDSCAPE DETAILED AREA 2022035-2022035-LD-DA103[4] (Detail) - not to scale
Source: LAND+FORM STUDIO



PLAN VIEW - WATER PLAY SCULPTURAL FORM - Scale 1:100 A3
Source: Vertebrae

WATER CYCLES: APPROACH

Water Cycles is designed to offer various experiences and activities to accommodate a range of ages and abilities. The sculptural water feature platform and additional interpretive design surface indentations capture water to foster temporal experiences that deepen connections with water and engage sensory interaction. Water is considered an artistic material through smell, texture, temperature, visual and auditory cues, passive observation, and active manipulation of water flow.

1. EXPERIENTIAL / PASSIVE

- Connection, discovery and celebration - local stories and experiences of water told through community co-designed interpretive design elements
- Sensory engagement - touch, sight, smell and sound of water
- Encourage imagination and creative play
- Biophilic design connections with nature supporting wellbeing
- Temporal experiences that deepen connections with water
- Shared social interaction through cooperative play

2. ACTIVE

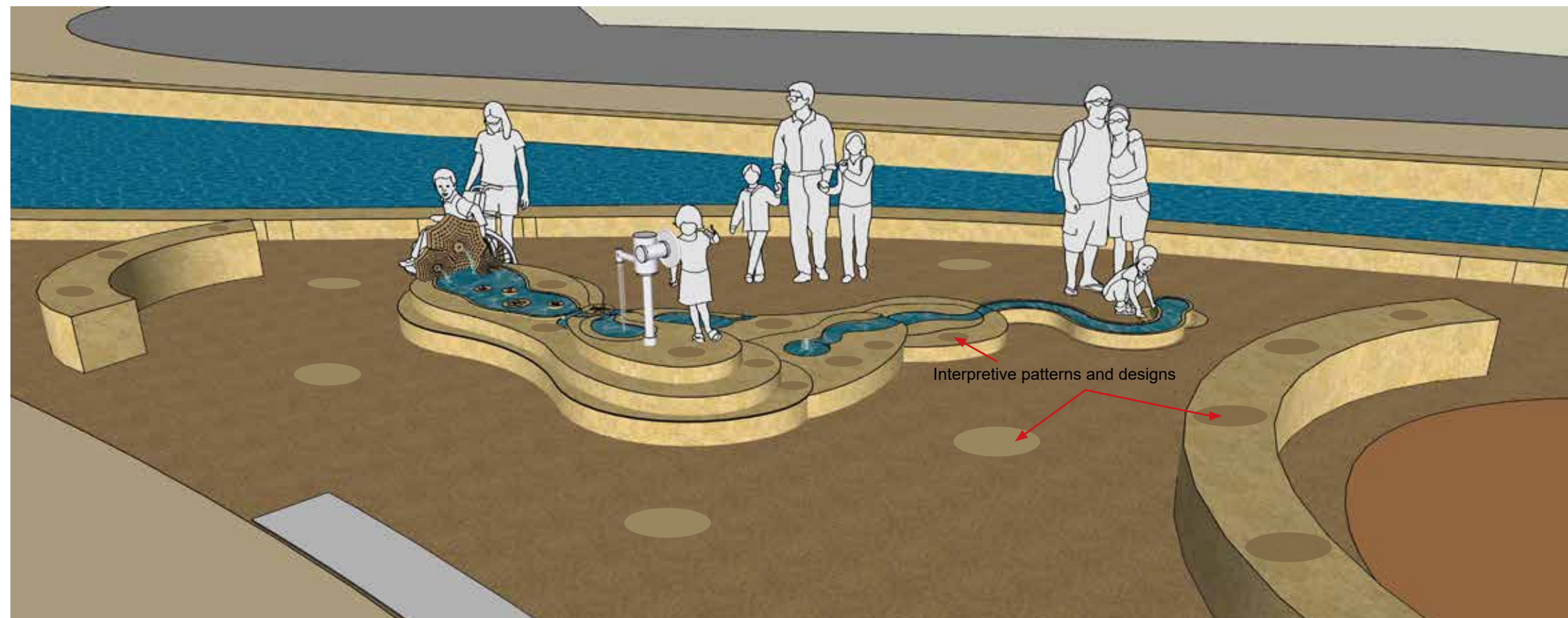
- Playful traverse of sculptural water form and interactive elements
- Various accessible surface level of water course channels and troughs with easy operable water release and proprietary water play equipment components for everyone to use
- Cooperative interaction through diversion of water flow routes
- Impromptu games such as leaf and stick race along water course

3. INTERPRETIVE and EDUCATIONAL

- Tiered sculptural platform mimic topographic and hydrological processes of water catchment and stormwater flow
- Control and divert water routes for a fun natural and constructed environment hydrology educational experience
- Align educative connections to swale and WSUD outcomes of the Merrylands Town Centre Public Domain Plan 2021 (Draft) and Cumberland DCP – Part F2-7 Merryland Neil Street Precinct
- Exploration of biodiversity and aquatic ecological transitional zones e.g. freshwater, brackish and saltwater/marine
- Earth's hydrological cycle and microclimates - observe captured water and evaporation rates of water filled sandblasted artwork interpretive design surface indentations (approx 3-5mm depth to prevent water stagnation)

4. SUSTAINABILITY, SAFETY and MAINTENANCE

- Sculptural water form under 500mm fall height
- Mains sourced potable water and designed for non-bathing.
- Shallow channels/troughs and any water overflow use natural gravity leading to drainage points on the water feature and paving drainage grates/grills outside of the sculptural form potentially draining into the swale.
- Efficient use of potable water reduces testing requirements
- Turn off/reduce water usage, limiting hours of use during droughts or cooler months sustainably conserves water
- Rain events flush out the overall site



Water play activities are consolidated into a sculptural form. Interpretive patterns and designs are integrated into the tiered form and extend to the surrounding paving and seating surfaces. Source: Vertebrae

WATER CYCLES: WATER PLAY COMPONENTS

WATER PLAY ACCESSIBILITY

The water features various tiered surfaces and channel levels provide accessible play and activities for everyone to enjoy. Individual and cooperative water play is encouraged through artistic elements fitted with low flow easy push-buttons and proprietary water play equipment.

Potential LED illumination strips integrated with the water feature stepping will express the sculptural form and represent imagined water flow and movement through programmed chaser effects. The creative illumination of the water feature aligns with Crime Prevention through Environmental Design (CPTED) and safety-by-design principles to enhance community safety and surveillance when people use public domain spaces later in the day when temperatures drop on hot days.



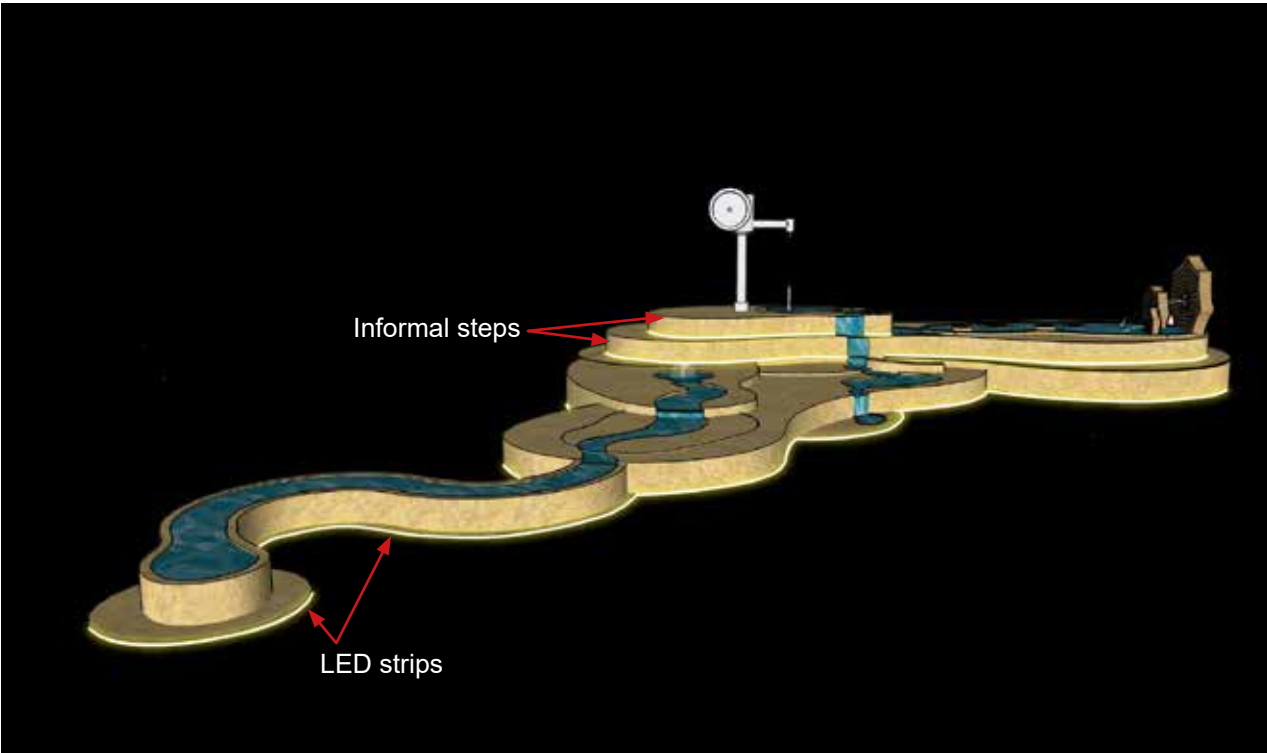
Imagination in the absence of water



Dry channel



Captured potable/rainwater (3-5mm depth) reveals interpretive imagery



Informal steps to access water pump based on stair standards. LED strips integrated into tiered steps
Source: Vertebrae



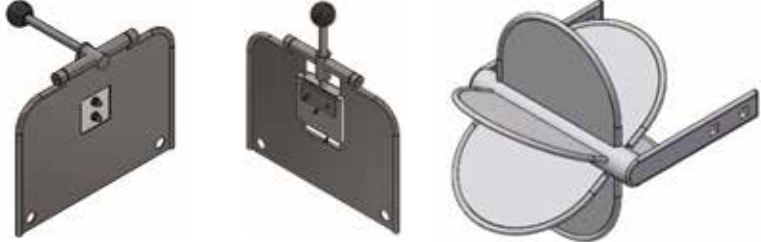
Tumbalong Park, Darling Quarter water play equipment
Source: <https://blog.naver.com/brandonkor/221762584553>



Tumbalong Park Darling Quarter water play equipment
Source: <https://blog.naver.com/brandonkor/221762584553>



Lizard Log - Western Sydney Parklands.
Source: <https://www.westernsydneyparklands.com.au/places-to-go/lizard-log/>



Indicative proprietary water play equipment
Source: <https://www.playgroundcentre.com/categories/sand-water-play/>

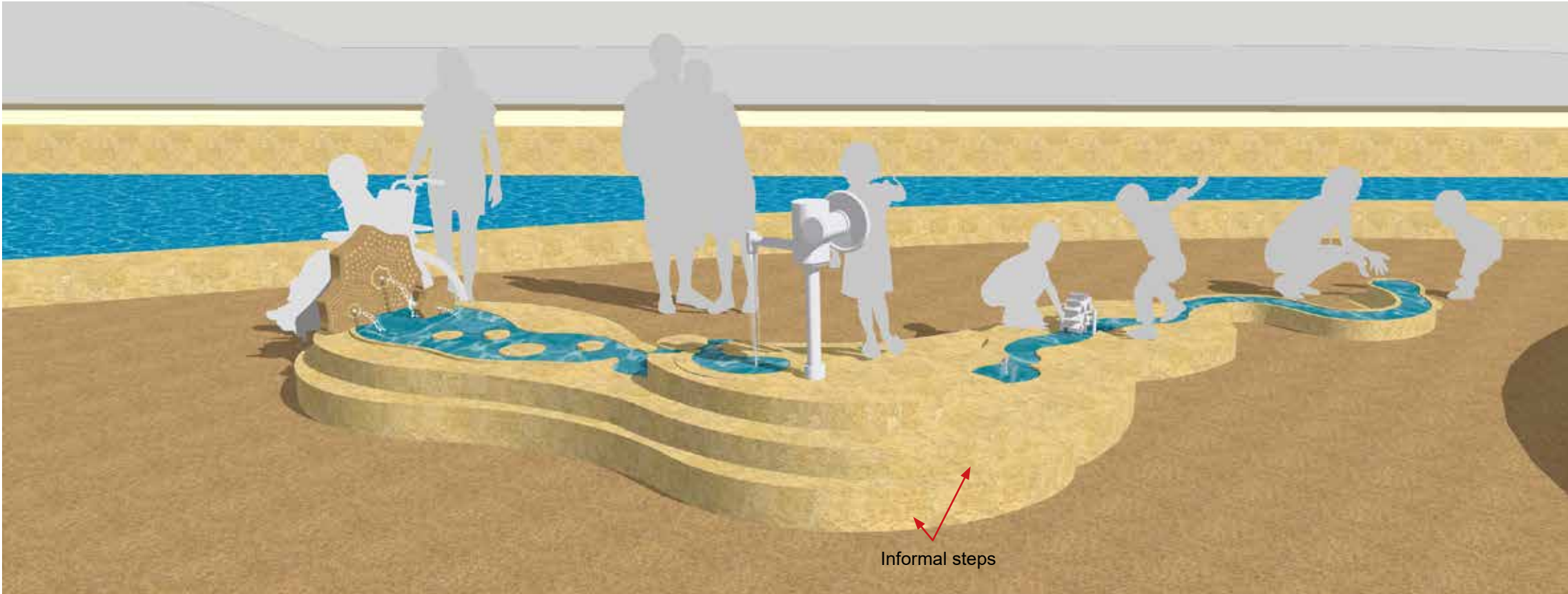


Accessible artworks with low-flow push button.
Source: Vertebrae



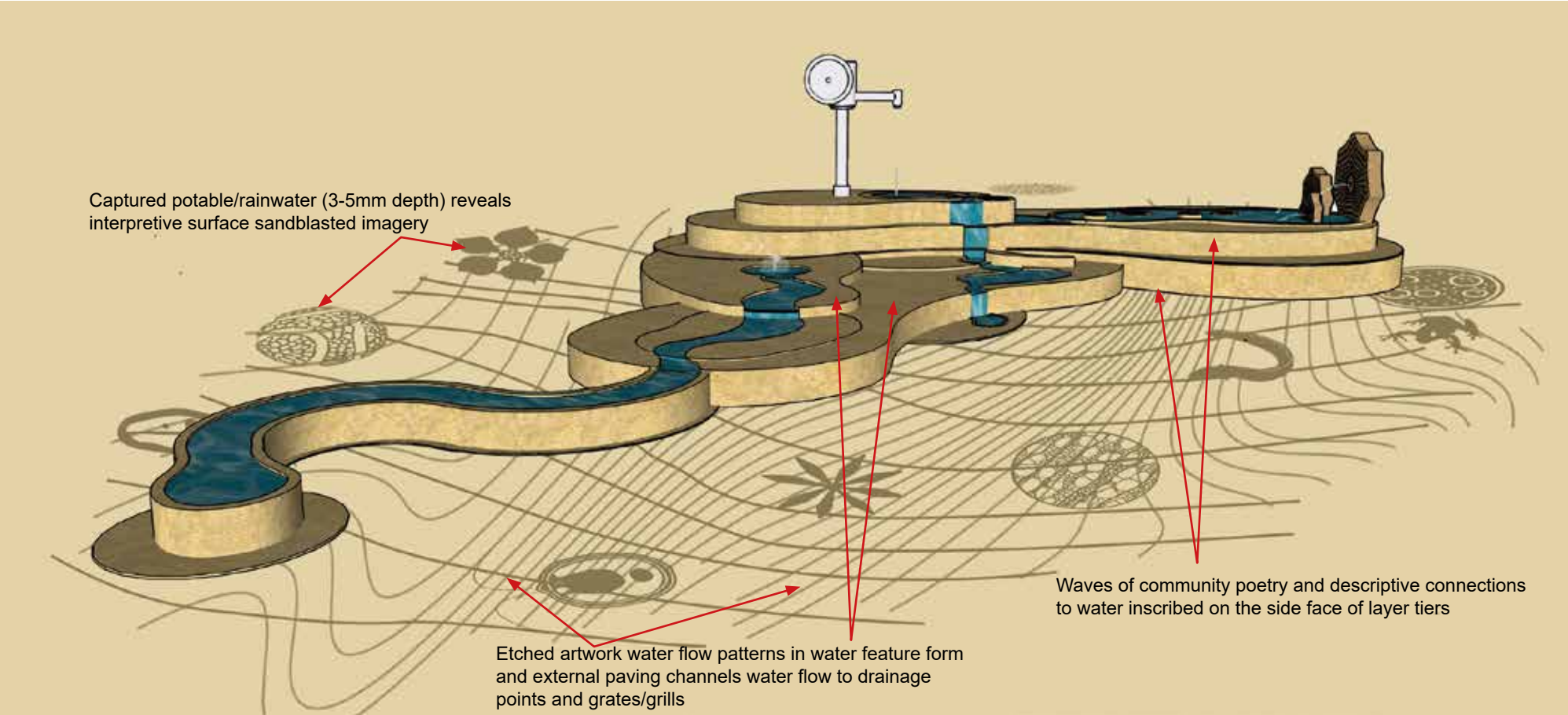
Bungarribee Park, Western Sydney Parklands.
Source: <https://www.westernsydneyparklands.com.au/things-to-do/picnic-and-play/>

WATER CYCLES: PERSPECTIVE VIEWS



Informal steps to access water pump based on stair standards. Source: Vertebrae

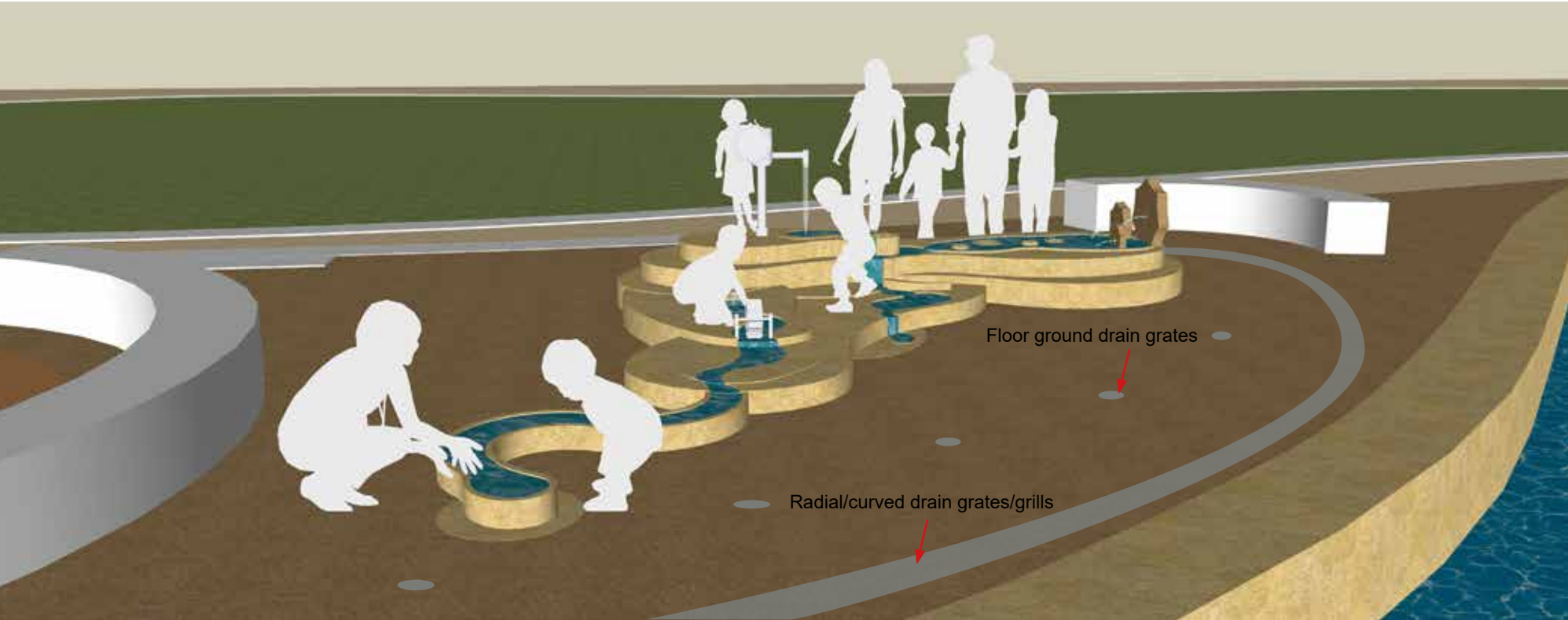
WATER CYCLES: PERSPECTIVE VIEWS



Interpretive Artworks - Indicative only, artworks co-designed with the local community. Source - Vertebrae



Floor ground drain grates

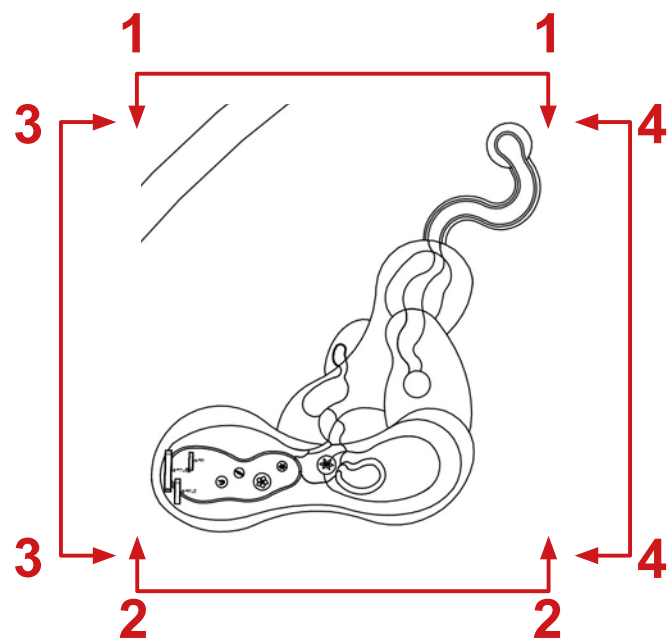


Drainage points grates/grills locations to be determined with engineers. Water potentially drains into swale. Source - Vertebrae

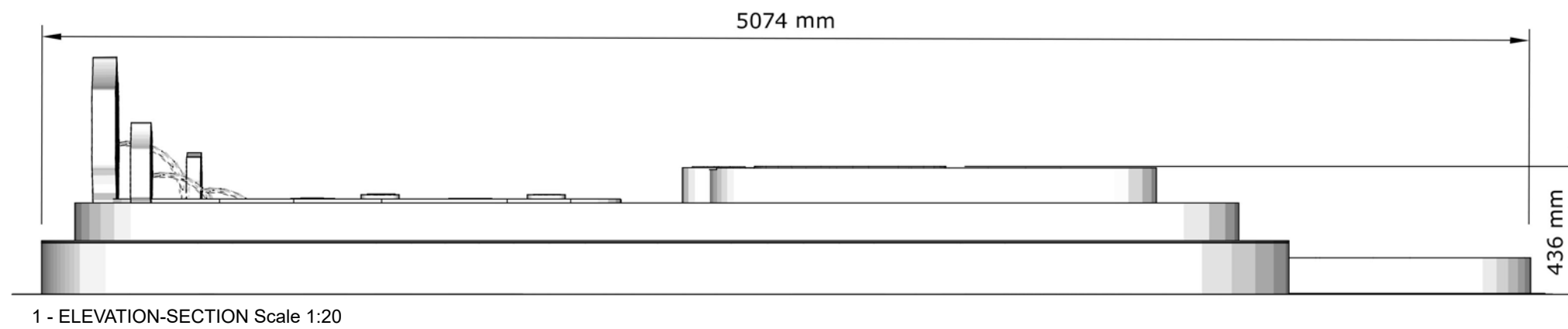


Radial/curved drain grates/grills

WATER CYCLES: SECTION-ELEVATIONS



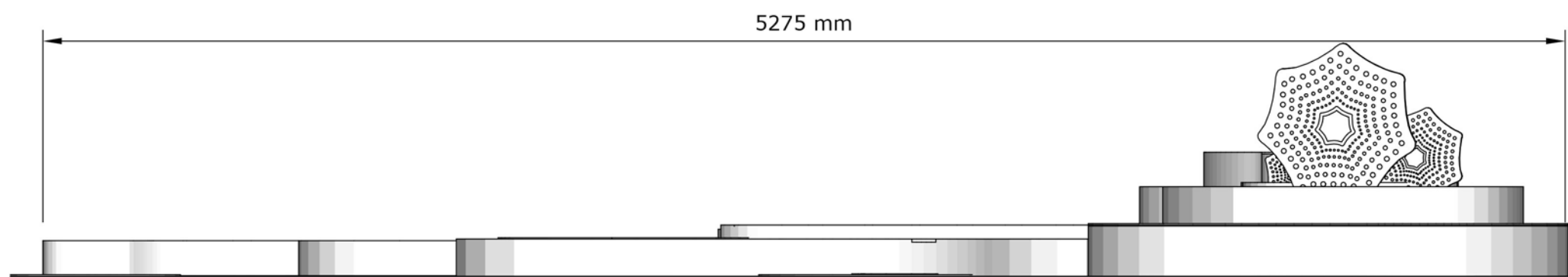
PLAN VIEW Scale 1:100 @A3
Source: Vertebrae



1 - ELEVATION-SECTION Scale 1:20



2 - ELEVATION-SECTION Scale 1:20



3 - ELEVATION-SECTION Scale 1:20



4 - ELEVATION-SECTION Scale 1:20

INTEGRATED INTERPRETATION ARTWORKS

OVERVIEW: ART, INTERACTION, INTERPRETATION + EDUCATION

Life Cycles + Water Cycles guided by the curatorial vision provide a framework to integrate artworks developed with the community to express cultural and environmental perspectives through interpretive and educational overlays. Interpretive works connect and consolidate other public domain spaces by extending ground plane paving and seating artwork treatments throughout the Gladstone Village. The specifics of the interpretive and educational curatorial themes informing artwork designs can explore personal and communal cross-cultural connections to nature, local ecology, water catchment hydrology, stormwater management and climate resilience. Artwork designs may be applied by sandblast surface etching, metal inlay or semi-relief cast images, written text and texture patterns.



Water feature sandblasted design of aquatic microorganisms
Art: Graham Chalcraft/Vertebrae. Water feature design: Arcadia Landscape Architects



Detail: Water feature with aquatic microorganism sandblasted designs
Artwork designs: Graham Chalcraft/Vertebrae



Sandblasted detail:
Artwork: Graham Chalcraft/Vertebrae



Paving with brass and resin inlay
Artwork: Graham Chalcraft/Vertebrae



Indicative render of artwork seating
Art: Graham Chalcraft/Vertebrae
CGI render: Sketch Design Group



Examples of flora and fauna species of the local Cumberland Plain Woodland vegetation communities and freshwater, brackish and saltwater macro and microscopic aquatic species.
Artwork designs: Graham Chalcraft/Vertebrae

COMMUNITY ENGAGEMENT

COMMUNITY WORKSHOPS + CO-DESIGN

Life Cycles + Water Cycles and integrated interpretive art elements support Merryland’s culturally rich and diverse communities to share communal stories, memories and experiences through artistic forms.

Community and stakeholder participation in the planning and designing of interpretive designs for the site will foster a sense of place, community ownership and guardianship. A public space well-used by the community decreases crime and increases perceptions of safety.

A creative workshop process will see designs developed and integrated into the principal public artworks ground plane, seating and surrounding public domain paving and swale stepping stone faces. Combined designs across Gladstone Village connect spaces to form an interactive interpretive trail whereby participants seek, discover and collect ‘rubblings’ like passport stamps.

Designs may be sandblast surface etched, metal inlay or semi-relief cast images, written text and texture patterns relating to the identified curatorial themes.

The project artist Graham Chalcraft (an environmental educator accredited in developing specialist interpretive tour content) will develop a community engagement strategy and art and interpretation education workshop programme in liaison with Cumberland Council team representatives for interactive co-design workshops with the local community, schools and stakeholders.

The project artist can mentor local emerging artists interested in public art careers.



Etched metal designs collected as ‘rubblings’ for interpretive discovery trail
Art: Graham Chalcraft/Placebo Culture



Semi-relief cast concrete stepping stones
Art: Graham Chalcraft/Vertebrae



Community designed wetland markers
Art: Graham Chalcraft



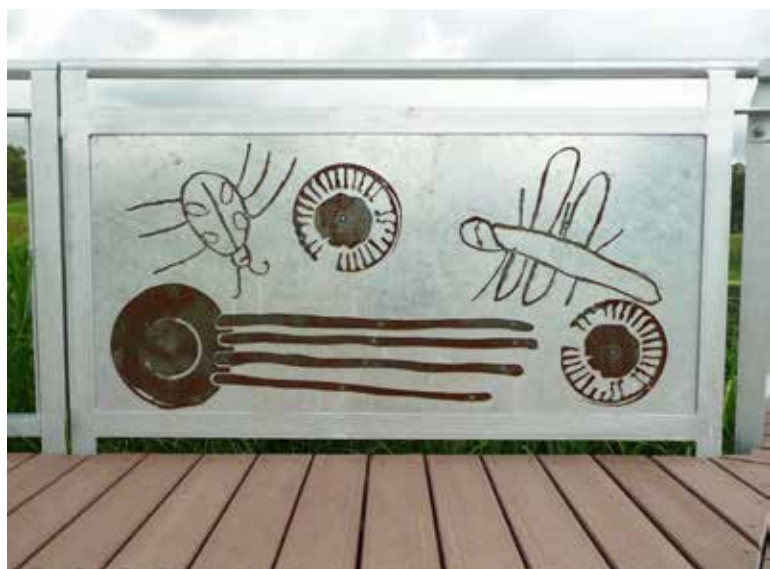
School student drawings translated into cast concrete seats.
Design: Graham Chalcraft/Vertebrae



Community and Stakeholder Engagement:
Wenty Seed Pod, Friends Park, Wentworthville for Cumberland Council - designed by Graham Chalcraft with artwork contributed by local community and artwork panels by local artist Alan Ward. Native plantings integrated into the work to reflect community consultation comments to enhance Wentworthville with greenery as part of the findings of Wentworthville, Story, Schemes and Dreams, Public Art Visioning Report by Vertebrae for Cumberland Council



Examples of expressive school student drawings exploring local ecology



School student drawings translated into wetland boardwalk fencing, Stockland Reserve, Fairfield
Design: Graham Chalcraft/Vertebrae